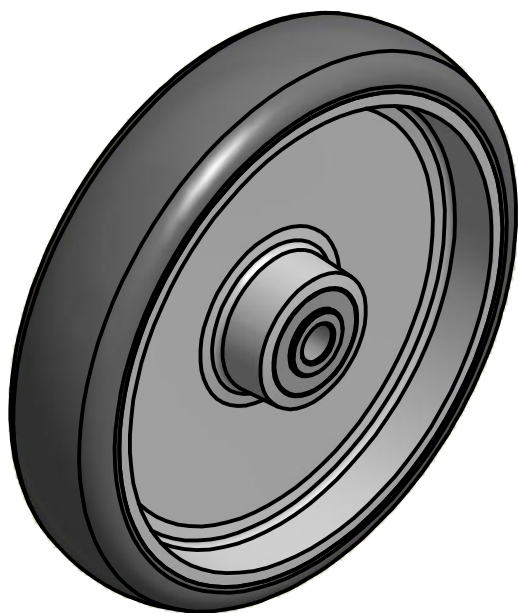



SECTION A-A'

**Load Capacity: 100kgr, for speed up to 4km/h
(According to EN 12530)**



 THESSALONIKI - GREECE	PRODUCTION OF INSTITUTIONAL CASTORS AND WHEELS		PERMIS. VARIATIONS:	PART No:
	This drawing is the property of RODA S.A. It must neither be reproduced in any manner nor shall it be submitted to third parties or competitors without our written consent		SURFACE FINISH :	UNF . DIM.:
C3 B2 A1 A/A	DESIGNED 13/6/2013 E.POLIMEROPOULOU DRAWN 13/6/2013 E.POLIMEROPOULOU CHECKED 14/6/2013 H.SAATZOGLOU	QUANTITY REPLACE :	SCALE	PART NAME : WL-TPC150S
				PART DESCRIPTION : HEAVY DUTY WHEEL OF GRAY THERMOPLASTIC NON MARKING RUBBER, Ø150mm-DOUBLE BALL BEARING
				DRAWING NUMBER :
				SHEET No.
				GEN. DWG. NUM. :