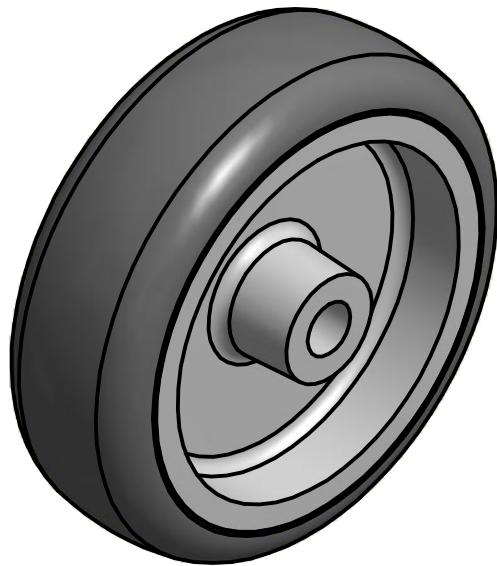



SECTION A-A'



Load Capacity: 60kgr, for speed up to 4km/h
(According to EN 12530)

 THESSALONIKI - GREECE	PRODUCTION OF INSTITUTIONAL CASTORS AND WHEELS		PERMIS. VARIATIONS:		PART No:	
	This drawing is the property of RODA S.A. It must neither be reproduced in any manner nor shall it be submitted to third parties or competitors without our written consent		SURFACE FINISH :		UNF . DIM.:	
DESIGNED 11/06/2013 E.POLIMEROPOULOU		DRAWN 11/06/2013 E.POLIMEROPOULOU		PART NAME : WL-TPA075M		
CHECKED 11/06/2013 SAATSOGLOY G.		QUANTITY		SCALE		PART DESCRIPTION : LIGHT WHEEL OF GRAY THERMOPLASTIC NON MARKING RUBBER Ø75mm-PLAIN BEARING
C3		B2		DRAWING NUMBER :		
A1		A/A		REPLACE :		GEN. DWG. NUM. :